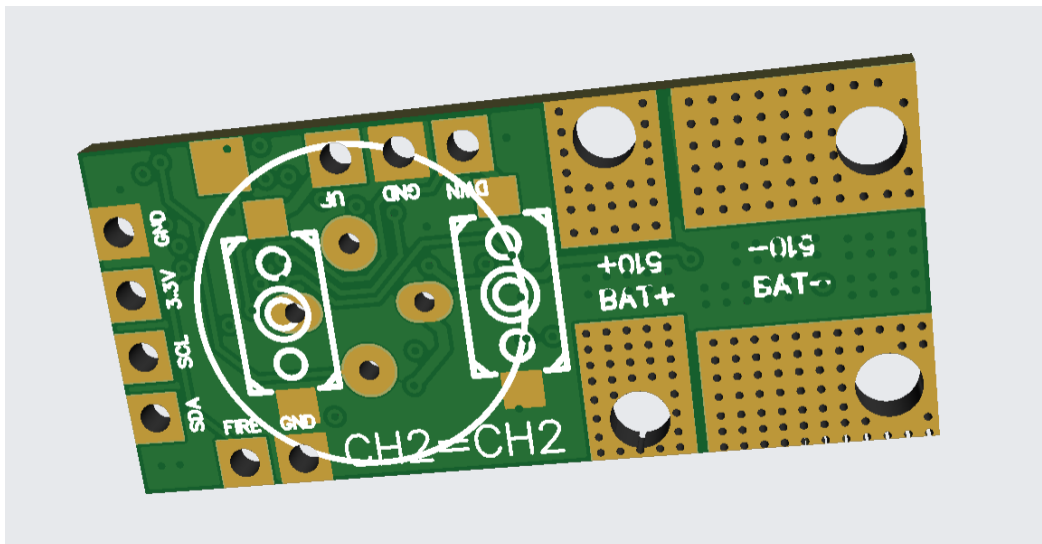


# Etileno PWM V2 User Manual

## Introduction

The Etileno PWM V2 is the most versatile regulated wattage board designed for use with personal vaporizers. It controls an N-channel MOSFET through Pulse Width Modulation (PWM) and allows wattage adjustments via an analog potentiometer or Up and Down buttons. The board supports the attachment of a 0.91" OLED display, which provides the user with critical information about safety features and functions. This board is capable of handling 45A in a 2s to 4s configuration.



## Features

- Reverse polarity protection
- Low Battery
- Short Circuit
- 10 seconds cut off
- Check Atomizer

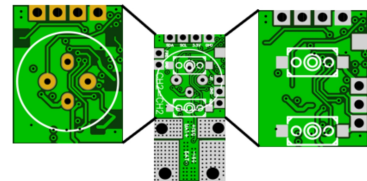
# Components and Options

## Potentiometer and Button Controls

The board can be configured using either a potentiometer or UP & DOWN buttons, available in both onboard and external configurations:

- **Onboard Controls:**

- 93PR 10K Potentiometer
- SMD 2-leg 6mm x 3.5mm switches



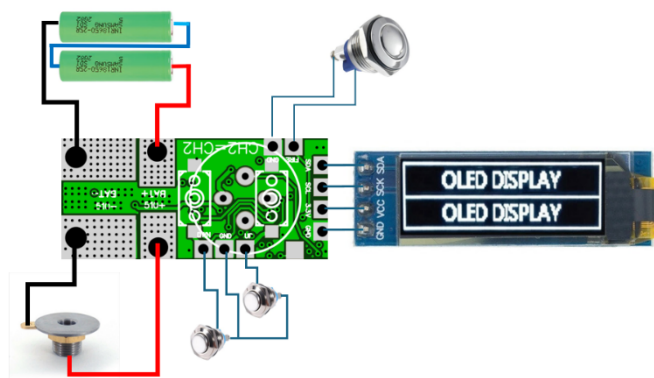
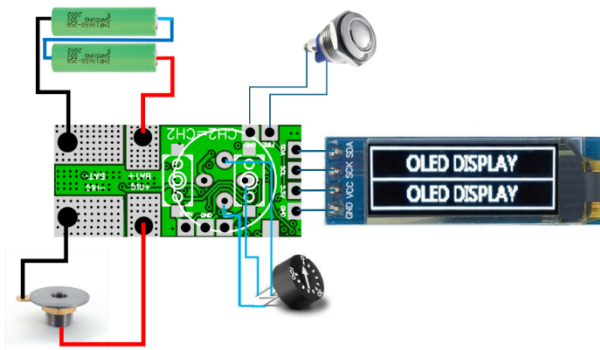
- **External Controls:**

- External switches connected to marked pads

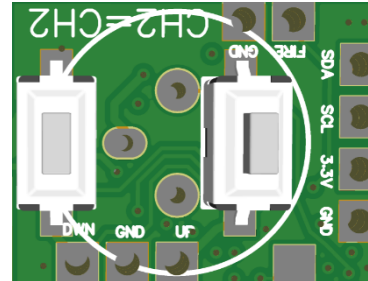
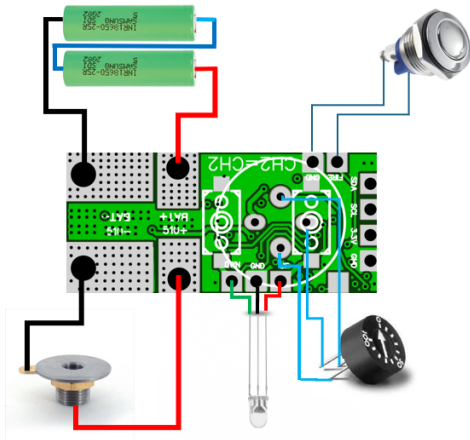
## Display Options

Depending on your setup, you can choose to attach:

- A 0.91" OLED display to show all information and alerts.



- A bicolor LED (green and red with a common anode) that flashes according to alert messages.



### Potentiometer Orientation

The potentiometer footprint on the board allows you to choose the orientation in which you want to install the potentiometer, providing flexibility based on your setup needs. The board will automatically detect the position of the potentiometer.



Pot on top of display



Pot at bottom of display

## Using the Onboard Switches

The onboard switches can be used to:

- Increase and decrease the wattage.
- Navigate through and select different options.

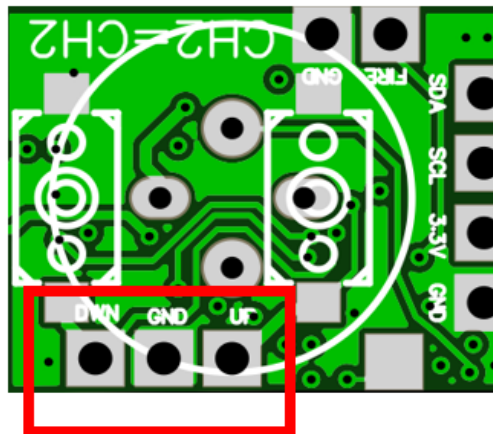
The board is designed to accommodate two 6mm x 3.5mm 2-pin SMD switches.

You can also choose with switch you will use as Up and Down in order to change the board orientation

With nine clicks of fire button, the board will enter in Up/Down configuration and will show “Press UP” on the display. Press the button that you want to use as UP and board will you’re your choice and back to main screen

## External Button Setup

You can opt to use external buttons by connecting them to the designated marked pads on the board.



## Using LED instead display

### Functions Overview

#### Button Click Functions

- **3 Clicks:** Block Up/Down buttons or potentiometer.
- **5 Clicks:** Block/Unblock the mod.
- **6 Clicks:** Choose language. Navigate using the up/down buttons or potentiometer to select your language (Spanish, English, German). Confirm with the fire button. The selection is saved in the internal memory.
- **7 Clicks:** Calibrate resistance reading. Attach an atomizer with a known coil value and adjust the reading using up/down buttons or the potentiometer. Confirm with the fire button. The adjustment is saved in the internal memory.
- **8 Clicks:** Flip display.
- **9 Clicks:** Select UP & DOWN buttons